



FORTUNE & COATES

The People's Estate Agent

<https://www.fortuneandcoates.co.uk>



10 Woodbine Close, Harlow, CM19 4PA

Guide price £200,000

Fortune and Coates are delighted to offer to the market this well-presented one bedroom first floor maisonette situated in the popular and convenient location of Woodbine Close, Harlow.

Upon entering, you are welcomed into a spacious entrance hallway with access through to all rooms and useful storage space. The lounge/diner is a bright and airy room, benefiting from large windows allowing plenty of natural light to flood through, creating a comfortable space ideal for both relaxing and entertaining, with ample room for both seating and dining furniture.

The kitchen is a bright and well-maintained space, fitted with a range of sleek white wall and base units complemented by a marble tiled splash back. Integrated

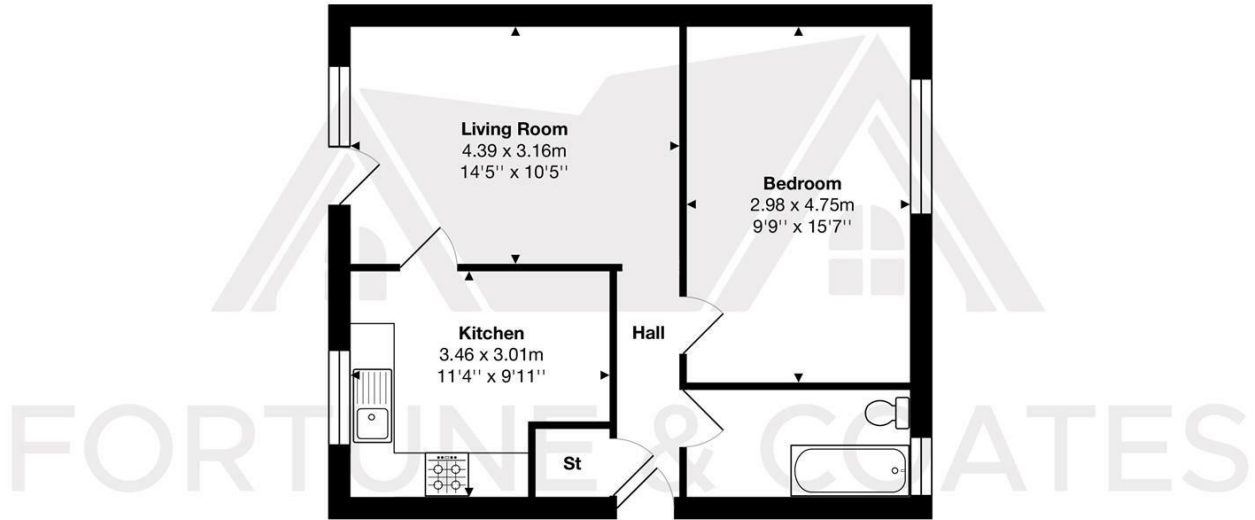
Living room 14'4" x 10'4" (4.39 x 3.16)

Kitchen 11'4" x 9'10" (3.46 x 3.01)

Bedroom 9'9" x 15'7" (2.98 x 4.75)

AGENT NOTE: The information provided about this property does not constitute or form part of an offer or contract, nor may it be regarded as representations. All interested parties must verify accuracy and your solicitor must verify tenure/lease information, fixtures & fittings and, where the property has been extended/converted, planning/building regulation consents. All dimensions are approximate and quoted for guidance only as are floor plans which are not to scale, and their accuracy cannot be confirmed. Reference to appliances and/or services does not imply that they are necessarily in working order or fit for the purpose.

Floor Plan

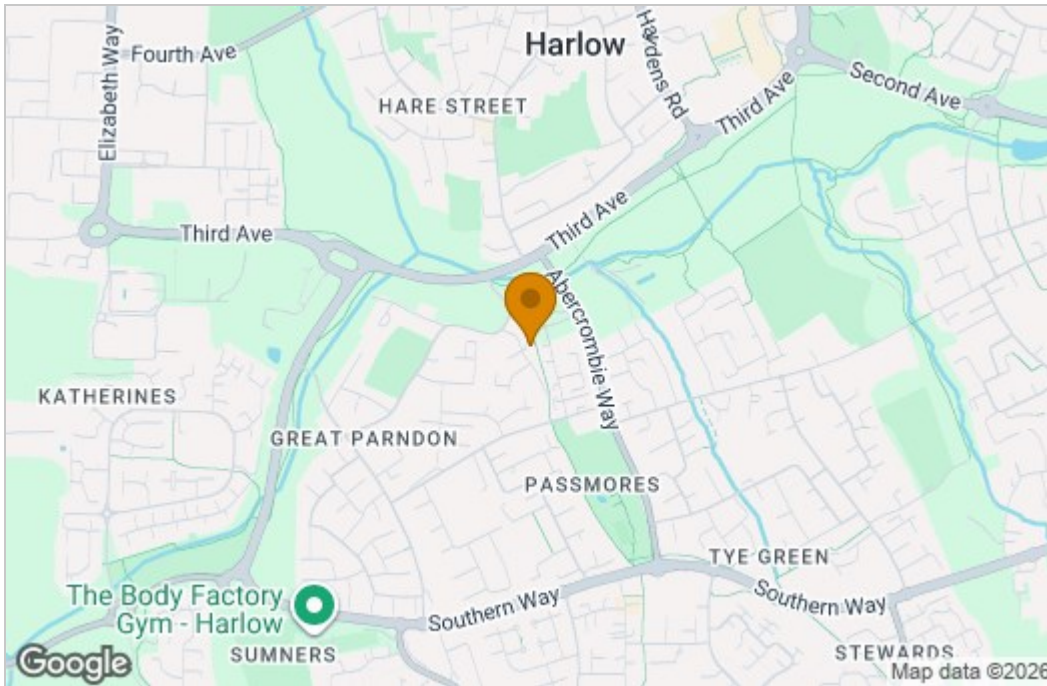


Total Area: approx. 46.9 m² ... 504 ft²

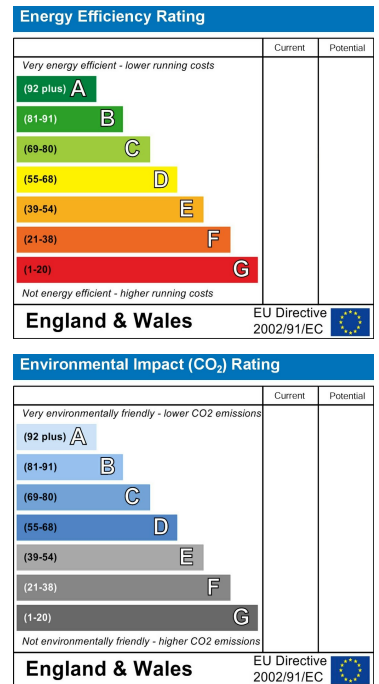
THE FLOORPLAN IS FOR ILLUSTRATIVE PURPOSES ONLY AND IS NOT TO SCALE.
Measurements and features are approximate and may differ from the actual property. Verify all details independently; no liability is accepted for errors or omissions.

Property marketing provided by www.fotomarketing.co.uk

Area Map



Energy Efficiency Graph



These particulars, whilst believed to be accurate are set out as a general outline only for guidance and do not constitute any part of an offer or contract. Intending purchasers should not rely on them as statements of representation of fact, but must satisfy themselves by inspection or otherwise as to their accuracy. No person in this firm's employment has the authority to make or give any representation or warranty in respect of the property.